

Band Test

Whole Note

Whole Rest



Half Notes

Half Rests



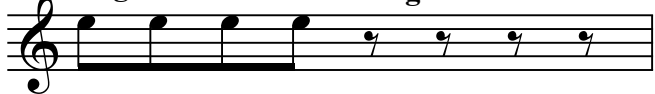
Quarter Notes

Quarter Rests



Eighth Notes

Eighth Rests



Sixteenth Notes

Sixteenth rests



Treble Clef or G clef

Bass Clef or F Clef

- shows G

- shows F



Key Signature

-Shows flats or sharps to be used throughout a piece


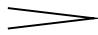


1. Musical Alphabet - ABCDEFG

2. Dynamics - volume

- a. **pp** - *pianissimo* - very soft
- b. **p** - *piano* - soft
- c. **mp** - *mezzopiano* - medium soft
- d. **mf** - *mezzoforte* - medium loud
- e. **f** - *forte* - loud
- f. **ff** - *fortissimo* - very loud
- g. **fp** - *fortepiano* - loud then soft
- h. **sfz** - *sforzando* - loud/forced

3. Dynamic Changes

- a. **cresc.** or  - *crescendo* - increase volume
- b. **decresc.** or  - *decrescendo* - decrease volume
- c. **dim.** - *diminuendo* - becoming softer

4. Tempo - speed of music

- a. **rit.** - *ritardando* - slowing down gradually
- b. **rall.** - *rallentando* - slowing down
- c. **atempo** - - return to original tempo
- d. **accel.** - *accelerando* - becoming faster

5. Other Terms

- a. **poco** - little
- b. **molto** - very
- c. **subito** - suddenly

6. Levels of Counting

- a. **Beat** - *numbers* -1-2-3-4 (etc.)
- b. **Beat Divided** - *number/and* -1 and 2 and (etc.)
- c. **Beat Subdivided** - *number/e/and/ah* -1 e and ah (etc.)

7. Time Signature

- 7** - How many beats per measure
- 4** - What note gets the beat